



MODEL AKG-F-PTFE– FULL VIEW, FLANGED SIGHT FLOW INDICATOR - LINED OR COATED

Description:

The model AKG-F-PTFE is a full view, flanged sight flow indicator, available with a PTFE flange lining or PFA flange coating for ultimate corrosion resistance. It provides full 360 degree viewing of process media for maximum visibility of system fluid. Units are best suited for vertical applications, but horizontal mounting is allowed when no mechanical force is exerted on the glass cylinder. Standard sizes range from 1/2” through 12”. End connections are standard 150# ASME flanges. Standard flange materials are zinc plated carbon steel or 316 SS, with other materials available as an option. Standard tubes are borosilicate, and gaskets are PTFE envelope with silicone insert.

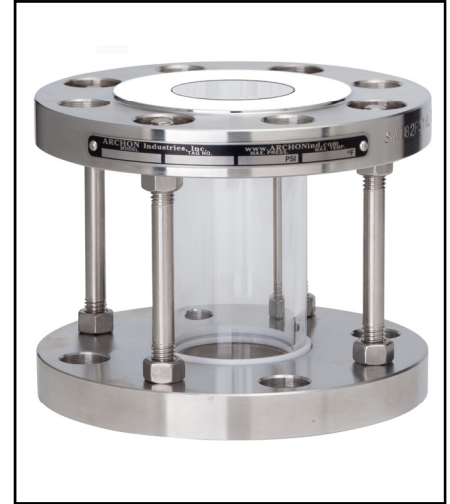
Operating conditions:

Lined and coated units are designed for full vacuum and pressure ratings as shown in the table below. Temperature rating is 350°F.

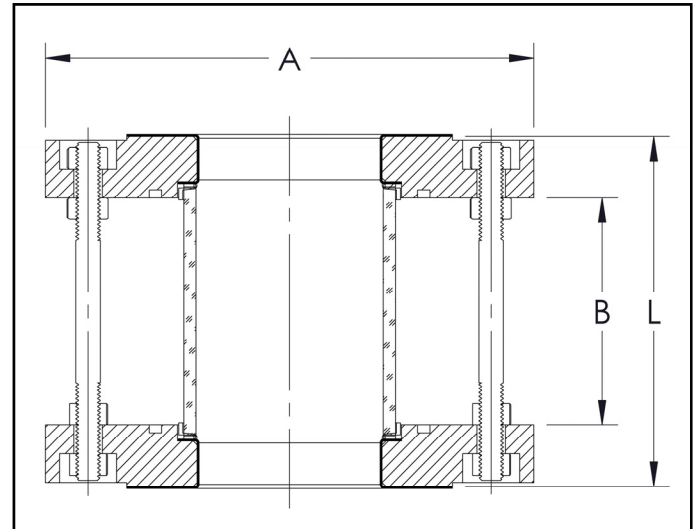
Options and accessories:

Models can be supplied with the following options and accessories:

- Impact resistant protective shield is optional.
- Non-standard overall lengths (either shorter or longer) are available.



Flange Size	"A"	"B"	"L"	Max. Pressure
1/2"	3.5"	3.1"	4.13"	150
3/4"	3.88"	2.8"	4.13"	150
1.0"	4.25"	2.5"	4.13"	150
1.5"	5.0"	2.5"	4.13"	120
2.0"	6.0"	3.3"	4.88"	100
3.0"	7.5"	3.5"	5.5"	100
4.0"	9.0"	5.6"	7.63"	70
6.0"	11.0"	8.0"	10.13"	45
8.0"	13.5"	11.3"	13.5"	25
10.0"	16.0"	12.0"	14.25"	20
12.0"	19.0"	11.8"	14.38"	20



Ordering Information:*

Model: AKGF - - - -

Size:	030: 3.0"	End Flange:	Seal Gasket:	Sight Tube:	Accessories:	Configuration:
005: 1/2"	040: 4.0"	A: Carbon Steel	19: PTFE Env. Silicone	A: Borosilicate	Q: PTFE Lining	00: Standard
007: 3/4"	060: 6.0"	B: 304 SS	20: PTFE Env. Viton	C: Quartz	U: PFA Coating	01 - 99: Special
010: 1.0"	080: 8.0"	C: 316L SS		E: Acrylic		
020: 2.0"	100: 10"	J: Alloy C276				
025: 2.5"	120: 12"	K: Alloy 20				

**Contact ARCHON for additional material options, temperature ratings or special configurations.*