



ARCHON model HL Lighting Units

Section 2003
Bulletin 1001
Issued 01/08
Page 003

ARCHON model HL Lighting Units

The model HL Lighting Units are for Non-Hazardous applications and provide reliable and efficient observation of vessel contents. When combined with a circular sightglass the model HL lighting units provide glare free illumination of vessel contents while utilizing only one port. The lighting unit sits on the ID of the sightglass taking up half of the viewing area for lighting and half for viewing.

Application:

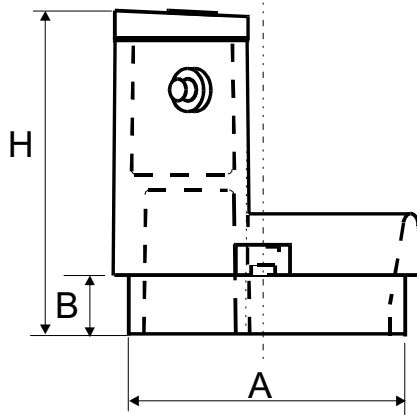
Used on ARCHON model KB, KB-RF, KB-FT, KB-WN type sightglasses. Providing lighting and viewing in one sightglass!

Service:

For Non-Hazardous applications only. Units are equipped with a momentary on/off switch. The Lighting units operate independent of operating conditions inside of the vessel.

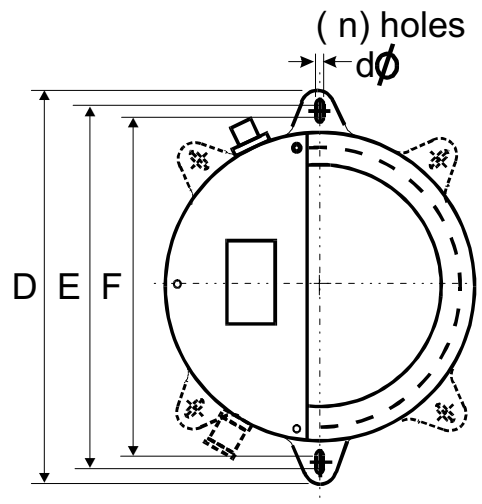
Electrical:

24V/20, 50 or 100W
 120V/ 100W
 Halogen Bulb



DIMENSIONS IN INCHES

DIMN	HL50	HL80	HL100	HL125	HL150	HL200
A	3.11	3.90	4.88	5.83	6.81	8.82
B	0.63	0.65	0.79	0.91	1.10	1.30
C	2.68	4.40	3.34	3.66	4.21	4.21
D	5.27	6.25	7.36	8.34	9.64	12.0
E	4.17	5.03	6.18	7.16	8.27	10.6
F	4.56	5.47	6.57	7.55	8.66	11.0
d ϕ	0.28	0.28	0.28	0.28	0.35	0.35
n	(2)	(2)	(4)	(4)	(4)	(4)
Volts	24 dc	120 ac	120 ac	120 ac	120 ac	120 ac
Watts	20	100	100	100	100	100



Lighting Unit	Weld Pad Sightglass
HL50	KB50
HL80	KB80
HL100	KB100
HL125	KB125
HL150	KB150
HL200	KB200