



**LED
UL HAZLOC
FIXTURE**



EX99-LED



FEATURES

- Hazardous location luminaire
- Perfect for environmental chambers, beverage process, sightglasses, sight flow indicators and manways
- Unique Thermal Management Structure (TMS) for exceptional heat dissipation
- High power CREE™ COB LED
- Proven LED driver for ultimate reliability
- Cast aluminium precision machined housing provides separate compartments for electronics & wiring
- Designed for harsh environment operating capability
- High grade optics for exceptional performance
- Optional mounting brackets and tri-clamp mounting adapter available

PRODUCT SPECIFICATIONS

Model	Power (Typ.)	LED Type	CCT	Efficacy	Luminous Flux (Typ.)	Beam Angle	Input Voltage
EX99-LED	14W	CREE™	4000K	≥93lm/W	1300lm	26° (FWHM)	120 / 240 / 277VAC 47-63Hz

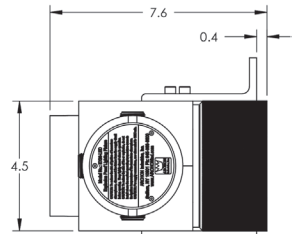
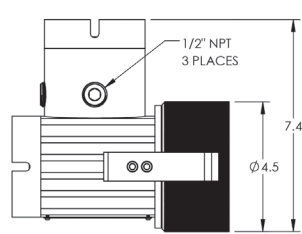
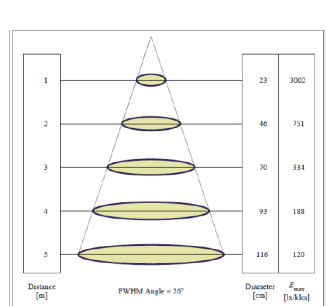
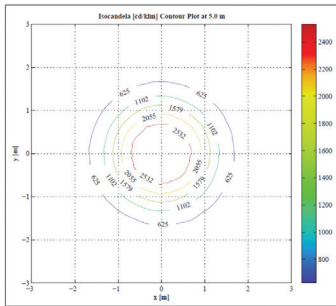
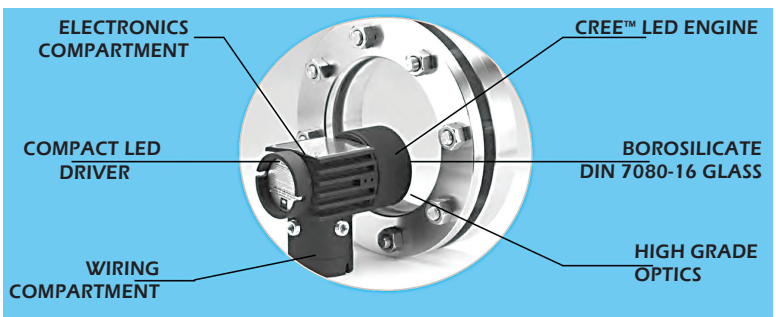
Electrical Specifications:

- Power Input: AC120-277V
- Power Factor: ≥0.9
- THD: <20% @ full Load

RATING: UL 844 Listed

This fixture is suitable for use in the following locations as defined by the National Electrical Code:
Class Division Groups: Class 1, Div 1, Groups C&D / Class 1, Div 2, Groups C&D
Temperature Code: T6 / This fixture is rated for Temperature Code T6

LED vs. Halogen	Halogen	LED
Power Consumption	100W	14W
Lamp hours	<1000 hrs	>65,000 hrs
Operating temperature (Exterior)	170°F (76°C)	87°F (31°C)
Lumen Output	~700	~1300
Efficacy	7 lm/w	93 lm/w
Color Temperature	2900K	4000K
Input Voltage (Range)	AC120V	AC120-277V
Input Current	AC 0.83A	AC 0.12A
Assembly Weight	6lb 13oz (2.78kg)	6lb 8oz (3.99kg)



800.554.1394

357 Spook Rock Rd | Suffern, NY | 10901
 sales@ARCHONind.com
 Fax 845.368.3040