



ARCHON Industries, Inc.

357 Spook Rock Road, I-505

Suffern, NY 10901

Tel: (845) 368-3600

Fax: (845) 368-3040

www.ARCHONind.com

sales@ARCHONind.com

Hinged Sight Glass

With or without illumination

Model: **HLH125**
HLH200



Installation / Operation / Maintenance Instruction

Instruction No.:

1034.1 Rev~

Issued:

03/27/2015

Approved:

Frank Bongiorno
Engineering Manager

TABLE OF CONTENTS

PAGE

Product Warranty	1
1.0 About the Manual	1
2.0 Introduction	1
2.1 System Description	1
3.0 Available Models	2
4.0 Installation	2
4.1 Preparation for welding	2
4.2 Welding	3
4.3 Assembling / Re-assembling Sight Glass	3
5.0 Operation	3
6.0 Maintenance	4
6.1 Maintenance Procedures	4
6.2 Troubleshooting	4
7.0 Removal / Disassembly / Re-assembly	4
7.1 Disassembly	5
7.2 Re-assembly	5
8.0 Assistance	5

TABLES AND FIGURES

Figure 1	Assembly view	3
Figure 2	Dimensional drawing.....	5

PRODUCT WARRANTY

ARCHON Industries Inc., warrants its products as designed and manufactured by ARCHON to be free of defects in material and workmanship for a period of one year after the date of installation or eighteen months after the date of manufacture, whichever is earliest. ARCHON will, at its option, replace or repair any products that fail during the warranty period due to defective material or workmanship.

Prior to submitting any claim for warranty service, the owner must submit proof of purchase to ARCHON and obtain written authorization to return the product. Thereafter, the product shall be returned to ARCHON in Suffern, NY, with freight prepaid.

This warranty shall not apply if the product has been disassembled, tampered with, repaired or altered outside of the ARCHON factory, or if it has been subjected to misuse, neglect or accident.

ARCHON's responsibility hereunder is limited to repairing or replacing the product at its expense. ARCHON shall not be liable for loss, damage, or expenses directly or indirectly related to the installation or use of its products, or from any other cause or for consequential damages. It is expressly understood that ARCHON is not responsible for damage or injury caused to other products, building, property or persons, by reason of the installation or use of its products.

THIS IS ARCHON'S SOLE WARRANTY AND IN LIEU OF ALL OTHER WARRANTIES, EXPRESSED OR IMPLIED WHICH ARE HEREBY EXCLUDED, INCLUDING IN PARTICULAR ALL WARRANTIES OF MERCHANTABILITY OR FITNESS FOR A PARTICULAR PURPOSE.

This document and the warranty contained herein may not be modified and no other warranty, expressed or implied, shall be made by or on behalf of ARCHON unless modified or made in writing and signed by the President or a Vice President of ARCHON.

1.0 About the Manual

This manual has been prepared as an aid and guide for personnel involved in installation and maintenance. All instructions must be read and understood thoroughly before attempting any installation, operation or maintenance.

WARNING

Failure to follow instructions could result in breakage of the sight window glass, resulting in fluid escaping from the vessel and fragmenting glass. Always wear safety glasses when installing, servicing or operating a sight window. Failure to follow precautions can result in personal injury and property damage.

2.0 Introduction

ARCHON Industries, Inc.'s hinged sight windows are designed for observation of fluid flow in process lines or for observation of the level of the contents in a vessel or tank. These sight windows are available in a variety of sizes, styles and connection methods. The user should refer to ARCHON literature to identify the specific sizes, models and connection types available.

A hinged sight window permits the convenient monitoring of:

- fluid presence, level or volume of liquid in the viewing area
- fluid color, tint or hue
- fluid clarity, opacity, brightness or purity

The window assists the observer by creating a monitoring port for process fluid volumes, directions, and reactions without exposing the fluid to the external environment.

ARCHON's hinged sight window models are available with a flat or radiused lower weld pad.

2.1 System Description

The ARCHON hinged sight window consists of five basic components. Each component may vary slightly, depending on the desired physical and mechanical properties for the indicator. Refer to the exploded parts view in Section 9.

Light fitting - the cover provides a machined surface in which the glass and cushion are protectively seated. The cover provides an effective means of compressing the gasket between the glass and the lower pad using threaded fasteners.

Welding flange - the lower pad provides a mounting surface to place on the vessel wall. The lower pad provides a machined surface to which the gasket makes a seal.

Glass disc - the glass provides a window for vessel fluid observation.

Gaskets - when the nuts are tightened properly, the seals are compressed between the glass and the lower pad to tightly seal the gap and prevent leaking.

Closure hardware – includes the hand grip for securing the light fitting or top cover, hinge, and mounting screws.

3.0 Available Models

ARCHON offers the standard hinged sight window model HLH in the following sizes and configurations:

Model HLH125-HL - Weld Pad type, quick opening hinged with light assembly

Model HLH200-HL - Weld Pad type, quick opening hinged with light assembly

Model HLH125-NL - Weld Pad type, quick opening hinged with without light assembly

Model HLH200-NL - Weld Pad type, quick opening hinged with without light assembly

4.0 Installation

Upon receipt of the ARCHON hinged sight window, check all components carefully for damage which may have been incurred during shipping. **IMPORTANT: If damage is evident or suspected, do not attempt installation. Notify your carrier immediately and request a damage inspection.**

DANGER

Exceeding the design ratings or application's data limits can cause the glass to break, the unit to leak or sudden release of pressure. Do not exceed the design ratings for each particular unit. Failure to keep operating conditions below design ratings may result in severe personal injury and property damage.

CAUTION

Only qualified, experienced personnel who are familiar with sight window equipment and thoroughly understand the implications of the

tables and all the instructions should install the hinged sight glass. Failure to read and comply with the following instructions could result in personal injury or property damage.

INSPECTION:

- 1) Examine the glass to see that it is free of scratches, chips or other imperfections.
- 2) Ensure that the lower weld pad has been cleaned and are free of any foreign material.
- 3) Ensure that the vessel connection area has been cleaned and is free of any foreign material.

LOCATION PRECAUTIONS:

Locate the hinged sight glass:

- 1) where it can be easily seen;
- 2) away from areas where objects may be dropped thrown or generally allowed to contact the glass;
- 3) where it is protected from dust, grit or other objects that could damage the glass;
- 4) where it is protected from external thermal shock, such as a high temperature application being exposed to a cold air blast or cold water wash.

4.1 Preparation for units requiring welding

Welding must adhere to all applicable local and national codes and recognized safety practices. Use dimensional sheets or ARCHON product proposal to obtain dimensional information for the size and model.

If the top cover is assembled to the lower weld pad, you must remove the lower the top cover and any attachments. Hold the unit firmly while loosening and removing nuts and screws. Carefully remove and set aside the cover, light assembly, cushions, glass, and gaskets. These components can be reinstalled after welding **in this instance only.**

DANGER

Extreme care should be used when disassembling the hinged sight glass to avoid damaging the cushions, glass, shields, or gaskets. Damaging any of these components could result in glass breakage with sudden release of pressure and contained fluid, causing severe personal and property damage.

4.2 Welding

DANGER

DO NOT proceed with any welding while the vessel is in operation. Pressure increases the likelihood of the glass plate breaking and contents spraying out of the vessel. A vessel must be relieved of all pressure or vacuum, allowed to reach ambient temperature and drained or purged of all fluids before conducting installation or repair welding. Failure to follow this procedure could result in severe personal injury and property damage.

A hole must be cut in the vessel at the installation location at which the user wants the sight window. The hole must be equal in size or larger than the inside diameter of the Sight Window. Locate the weld pad over the hole in the tank or vessel ensuring that the hole in the tank or vessel and the viewing glass area are aligned with each other. Take note of the hinge location to ensure the sight glass swings in the proper direction.

Carefully position and tack weld the lower pad to the vessel wall in four (4) locations 90 degrees apart on the circumference of the welding pad. Complete welding of the pad to the vessel wall by making a continuous pass around the circumference of the unit.

Check flatness of each glass seating surface of the sight window by using a known flat piece of the same size glass and a thickness gauge. Surfaces must be flat within 0.005 inch. If the glass seating surfaces cannot be restored to this tolerance, the entire sight window must be disposed of and replaced. If tolerances are met, proceed with re-assembly of the sight window.

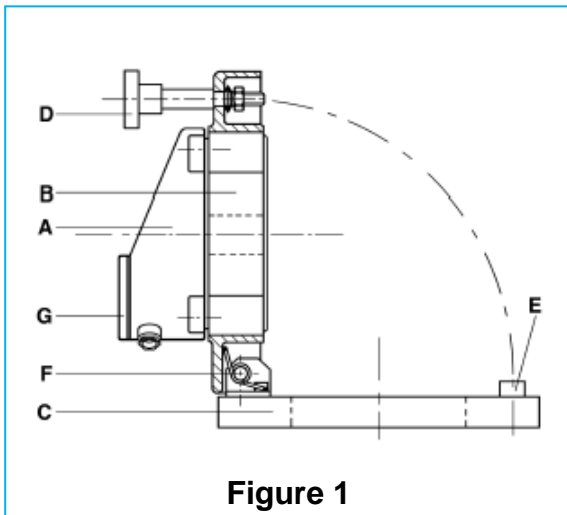


Figure 1

4.3 Assembling / Re-assembling

Refer to figure one for component identification assistance and position.

- 1) Carefully remove the light fitting from the shipping package and place in a safe area.
- 2) Clean any material from gasket sealing surface.
- 3) Carefully place the cover over the weld pad and align hinge and closure bolt holes.
- 4) Tighten screws fully with allen head driver.
- 5) Carefully closed hinged cover and tighten closure bolt.

DANGER

Torque-ing under pressure yields incorrect torque and increases the likelihood of the glass disc breaking and contents spraying out of the vessel. The sight window must be relieved of all pressure or vacuum, and allowed to reach ambient temperature. The vessel must be drained or purged of all fluids before re-torque-ing. Failure to follow this procedure could result in severe personal injury and property damage.

5.0 Operation

Before initializing sight window operation, check that all installation procedures have been completed. Use only qualified experienced personnel who are familiar with sight window equipment and thoroughly understand the implications of the tables and all the instructions. Check that the closure bolt has been tightened. Check that all connections are pressure tight and the glass is clean and free of any damage.

DANGER

Sight windows should be brought into service slowly to avoid excessive shock or stress on the glass. Rapid pressurization of a sight window can cause glass breakage/fragmentation and fluid leakage. Failure to take proper precautions could result in severe personal or property damage.

- A) Light Fitting (Max Müller AG)
- B) Light Fitting Holder
- C) Weld pad
- D) Closure bolt with grip head
- E) Closing head
- F) Tilting hinge
- G) Cover for light fitting

6.0 Maintenance

Use only qualified experienced personnel who are familiar with sight window equipment and thoroughly understand the implications of the tables and all the instructions.

Create a maintenance schedule for each specific installation of a Sight Window. On all inspections, regularly check the following items:

- 1) glass for cleanliness and signs of damage or wear,
- 2) sight window for signs of leakage at gaskets or along welds,
- 3) sight window for signs of internal or external corrosion, and
- 4) closure bolt tightness

Use only qualified experienced personnel who are familiar with sight window equipment and thoroughly understand the implications of the tables and all the instructions

DANGER

DO NOT proceed with any maintenance while the sight window is in operation. Pressure increases the likelihood of the glass plate breaking and contents spraying out of the vessel. A sight window in service must be relieved of all pressure or vacuum, allowed to reach ambient temperature and the vessel drained or purged of all fluids before conducting maintenance. Failure to follow this procedure could result in severe personal injury and property damage.

6.1 Maintenance Procedures

GLASS should be given regular and careful attention. Keep glass clean using a commercial glass cleaner and a soft cloth. Inspect the surface of the glass for any clouding, etching or scratching or physical damage such as bruises checks or corrosion. Glass that is damaged is weakened and may break under pressure. Shining a light at approximately a 45° angle will aid in detecting some of these conditions. Typical damaged areas will glisten more brightly than the surrounding glass because the light is reflected.

Detection of any damage, problem areas or surface wear is sufficient evidence to take the sight window

out of service. **DO NOT** proceed with operations until the glass has been replaced with a glass replacement kit following the assembly instructions in Section 4.

GASKET LEAKS must be repaired immediately. **DO NOT** proceed with operations until gaskets have been replaced.

CORROSION may occur if the user has selected an improper material for the Hinged Sight Glass application. It is the responsibility of the user to choose a material of construction compatible with both the contained fluid and the surrounding environment. If internal or external corrosion is present, the user must immediately perform an investigation. It may be necessary to contact an authorized ARCHON distributor to better determine the origin of the corrosion.

6.2 Troubleshooting

Problem: glass or shield becomes etched or clouded in service

Cause: fluid being handled is not compatible with the glass or shield material

Solution: replace the glass and/or shield

Problem: glass continually breaks in service

Cause: warped body as a result of mechanical or thermal stresses

Solution: reduce the stress and replace sight window.

7.0 Removal/Disassembly/Reassembly

DANGER

DO NOT proceed with any removal or disassembly while the sight window is in operation. Pressure increases the likelihood of the glass plate breaking and contents spraying out of the vessel. A sight window in service must be freed of all pressure or vacuum, allowed to reach ambient temperature and the vessel drained or purged of all fluids before proceeding. Failure to follow this procedure could result in severe personal injury and property damage.

7.1 Disassembly

The hinged sight glass should be disassembled by loosening the closure nut. Remove the cover, cushion, glass, and gaskets from the indicator using the appropriate safety precautions. Once a sight window has been disassembled, all glass must be disposed of because of wear; and all gaskets and cushions must be disposed of since they are permanently deformed by compression during service.

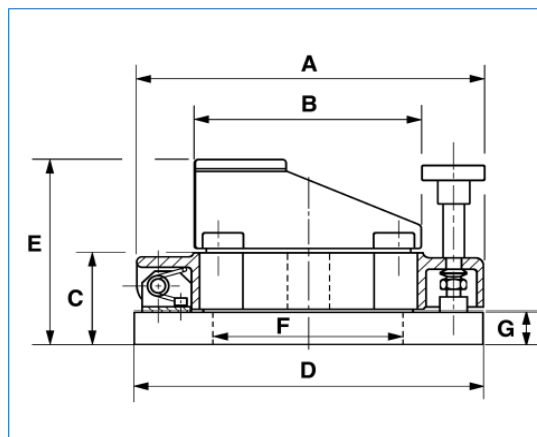
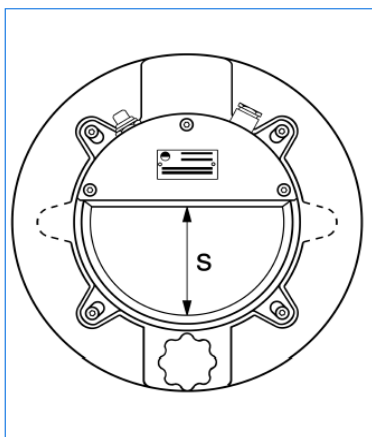
DANGER

DO NOT under any circumstances reuse glass or gasketing items previously in service, since they can cause leaks or high stress points resulting in glass breakage and severe personal and property damage. Glass that is broken is dangerous and should be disposed of in a safe manner determined by the user.

7.2 Reassembly

To prepare for installation of new glass, clean the gasket seating surfaces on the weld pad and cover.

Before installation, inspect the replacement glass for imperfections. During inspection, and during any subsequent handling of the glass, keep the glass from contacting other surfaces. Bumping or sliding of glass against other surfaces can result in glass breaking, scratching or chipping. Install the new glass by following the procedure in Section 4.



Type	KSG(B) 125	KSG(B) 200
A	248	333
B	162	245
C	70	80
D	250	335
E	140	175
F	136	205
G	25	25
S	80	140
Terminal voltage	V 24 / 12	24 / 12
Nominal rating	W 50 / 100	50 / 100

8.0 Telephone Assistance & Equipment Return

If you are having difficulty with your Sight Window, notify your local ARCHON distributor, or call the factory direct **(845) 368-3600** or email **sales@archonind.com**. To help us assist you more effectively, please have as much of the following information as possible when you call:

- Model #
- Name of the company from whom you purchased the Circular Sight Window
- Invoice # and Date
- Process Media
- Operating Temperature
- Operating Pressure
- Brief description of the problem
- Troubleshooting procedures that failed

You must obtain a Return Authorization (RA) number from ARCHON before returning anything. Failure to do so will result in the unit being returned to you, without being tested, freight collect. To obtain a RA#, the following information (in addition to that above) is needed:

- Reason for Return
- Person to contact at your company
- "Ship-To" address

There is a minimum charge of \$50.00 for evaluation of non-warranty units. You will be contacted before we repair the unit if there will be any additional charges. If you return a unit that is covered by the warranty, but is not defective, the minimum charge will apply.