



ARCHON Industries, Inc.

RT12 Spray Gun

Models:

- ◆ RT12-BB
- ◆ RT12-BR
- ◆ RT12-BW
- ◆ RT12-SB
- ◆ RT12-SR
- ◆ RT12-SW



Installation / Operation / Maintenance Instruction

Instruction No.:
Issued:
Approved:

1033
06/11/2014
Frank Bongiorno, Engineering Mgr.

357 Spook Rock Road
Bldg # 1 – 505
Suffern, NY 10901



Tel.: (845) 368-3600
Fax: (845) 368-3040
sales@archonind.com

PRODUCT WARRANTY

ARCHON Industries Inc., warrants its products, as designed and manufactured by ARCHON, to be free of defects in material and workmanship for a period of one year after the date of installation or eighteen months after the date of manufacture, whichever is earliest. ARCHON will, at its option, replace or repair any products that fail during the warranty period due to defective material or workmanship.

Prior to submitting any claim for warranty service, the owner must submit proof of purchase to ARCHON and obtain written authorization to return the product. Thereafter, the product shall be returned to ARCHON in Suffern, New York, with freight prepaid.

This warranty shall not apply if the product has been disassembled, tampered with, repaired or altered outside of the ARCHON factory, or if it has been subjected to misuse, neglect or accident.

ARCHON's responsibility hereunder is limited to repairing or replacing the product at its expense. ARCHON shall not be liable for loss, damage, or expenses directly or indirectly related to the installation or use of its products, or from any other cause or for consequential damages. It is expressly understood that ARCHON is not responsible for damage or injury caused to other products, building, property or persons, by reason of the installation or use of its products.

THIS IS ARCHON'S SOLE WARRANTY AND IN LIEU OF ALL OTHER WARRANTIES, EXPRESSED OR IMPLIED WHICH ARE HEREBY EXCLUDED, INCLUDING IN PARTICULAR ALL WARRANTIES OF MERCHANTABILITY OR FITNESS FOR A PARTICULAR PURPOSE.

This document and the warranty contained herein may not be modified and no other warranty, expressed or implied, shall be made by or on behalf of ARCHON unless modified or made in writing and signed by the President or a Vice President of ARCHON.

Introduction

The model RT12 Spray Gun is a heavy-duty, impact resistant spray gun with a stainless steel or bronze body and a replaceable synthetic body cover. The Model RT12 Spray Gun provides a variable liquid spray from a 50 degree hollow cone to a stream spray pattern by trigger control. The light trigger pull provides sensitive spray pattern control. The heat resistant rubber body cover remains comfortable at high liquid temperatures. The Model RT12 Spray Gun will accommodate inlet swivel connectors with 3/4" garden hose thread (F), 5/8" or 3/4" hose shank inlet connections. These connectors also have lock rings for locking the Spray Gun trigger in a spraying position.

System Description

Features of the Model RT12 Spray Guns:

- Maximum pressure and temperature :200 psi at 200° F (13.8 bar at 93° C)
- Single piece stainless steel or brass body.
- Stainless Steel valve stem.
- Buna-N valve seat and o-ring seals.
- Comfortable hand grip
- Easy operation - designed to reduce fatigue.
- Replaceable rubber body cover provides temperature insulation and protects spray gun from extensive wear.
- Easy repair - all components are user serviceable.

WARNINGS and SAFETY PRECAUTIONS

IMPORTANT: READ ALL INSTRUCTIONS BEFORE USING SPRAY GUN

- For water use only.
- Before spraying, gun must be pointed in direction of arrow shown on side of gun.
- If gun assembly is equipped with trigger lock ring, the ring must be released before spraying operation is finished.
- Proper clothing and eye protection should always be worn by operator and people in spray areas.
- ***DO NOT*** use with steam service.
- ***DO NOT*** point gun at any person or any part of body. High temperature liquids under spraying pressures can cause serious burns or injury.
- ***DO NOT*** exceed 200° F (93° C) temperature.
- ***DO NOT*** exceed 200 psi.
- ***DO NOT*** drop gun on trigger as this may actuate hot spray onto personnel.

INSTALLATION

1. Ensure water supply valve is off. Attach RT12 Spray Gun to a hose that has a pressure and temperature rating meeting that of your anticipated maximum pressure and temperature.
2. Examine all connections, making sure they are of proper type and are secure and leak-proof.
3. Holding the RT12 Spray Gun in a downward vertical position with arrows pointed away from the body, turn on the water supply valve.
4. After checking that all safety precautions were taken, begin spraying by slowly "squeezing" the trigger.

MAINTENANCE

With proper care, your Model RT12 Spray Gun will give you reliable service. To maintain this performance, parts should be inspected regularly and replaced when necessary with genuine ARCHON parts.

DISASSEMBLY PROCEDURE:

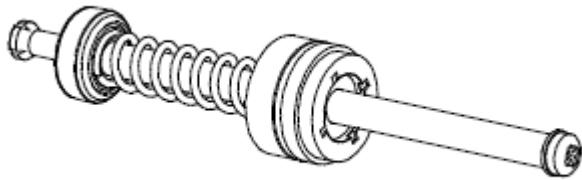
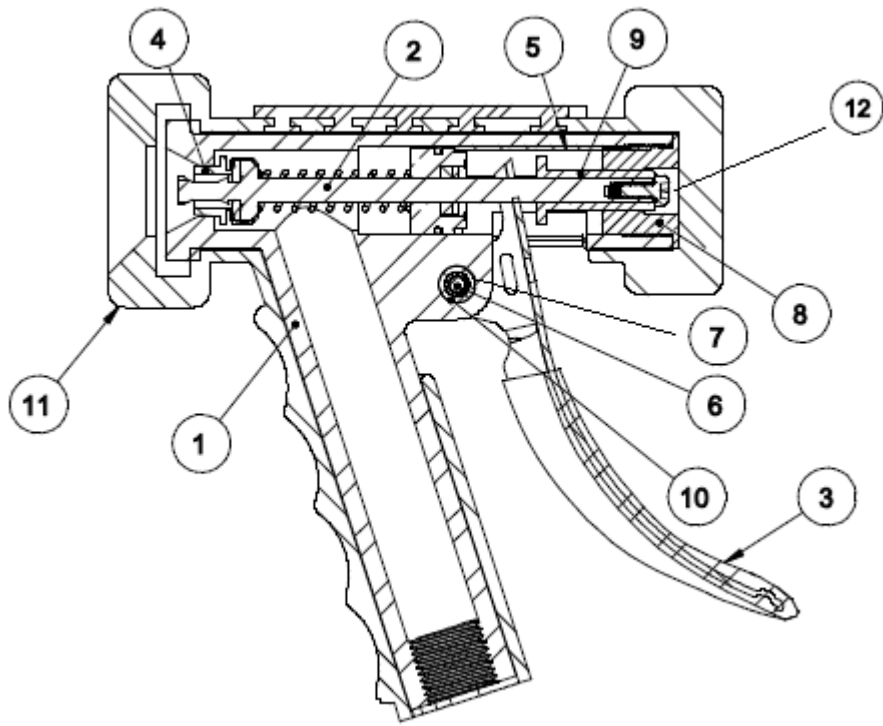
If it becomes necessary to disassemble this unit, follow these steps.

1. Make sure water supply valve is off.
2. Release all the pressure and liquid from the hose to RT12 Spray Gun by operating trigger unit until water ceases to flow.
3. Disconnect the RT12 Spray Gun from the hose.
4. Remove RUBBER COVER (11) by pulling on its back end until it clears the BODY (1). Pull the front of the BODY (1). This will expose PHILLIPS SCREW (12).
5. Unscrew and remove PHILLIPS SCREW (12).

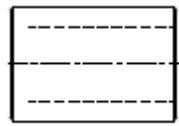
6. Remove HANDLE SCREW (6) and HANDLE BUSHING (7) and slip HANDLE (3) out of BODY (1). This will allow access to CARTRIDGE UNIT (2).
7. Remove LOCK SCREW (8) by unscrewing it out of the back end of BODY (1).
8. Remove STEM GUIDE (9), which will expose the CARTRIDGE UNIT (2).
9. Remove CARTRIDGE UNIT (2), which will push out CAGE (5) from the BODY (1).

ASSEMBLY PROCEDURE:

- A. Before reassembling gun apply a moisture resistant valve lubricant such as Dow Corning III on any moving parts.
 - B. When reassembling the RT12 Spray Gun apply blue LOCTITE® on PHILLIPS SCREW (12), HANDLE SCREW (6).
1. Insert CARTRIDGE UNIT without PHILLIPS SCREW (12), into BODY(1).
 2. Insert CAGE (5) into BODY (1), which will push cartridge unit all the way in.
 3. Insert STEM GUIDE (9) over CARTRIDGE UNIT (2).
 4. Screw on PHILLIPS SCREW(12) onto CARTRIDGE UNIT (2) until screw bottoms out. Apply LOCTITE® onto PHILLIPS SCREW (12)
 5. Screw on LOCK SCREW (8) on to the back of the BODY(1).
 6. Slip HANDLE (3) over BODY (1), with HANDLE BUSHING (7) and HANDLE SCREW (6) through the HANDLE (3). Apply LOCTITE® to HANDLE SCREW (6) and tighten until screw bottoms out.
 7. Slide RUBBER COVER (11) back over the front of the BODY (1), slowly sliding it over the rear of the BODY (1) covering the complete BODY (1). Then slide slowly to cover the rear of the BODY (1).



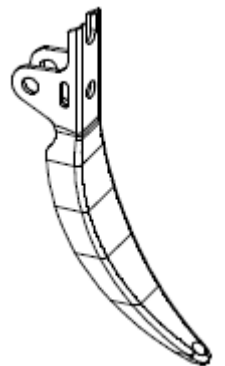
2



10



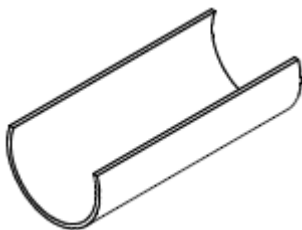
9



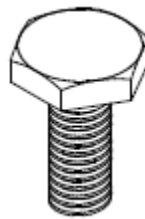
3



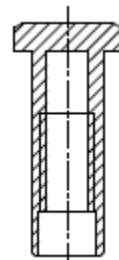
4



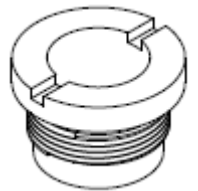
5



6



7



8

ITEM NO.	PART NUMBER	DESCRIPTION	QTY.
1	RT12-29	BODY	1
2	RK-RT12	CARTRIDGE UNIT	1
3	RT12-06	HANDLE	1
4	RT12-08	SEAT	1
5	RT12-18	CAGE	1
6	RT12-22	HANDLE SCREW	1
7	RT12-24	HANDLE BUSHING	1
8	RT12-30	LOCK SCREW	1
9	RT12-31	STEM GUIDE	1
10	RT12-29B	BODY BUSHING	1
11	RT12-20	RUBBER COVER	1