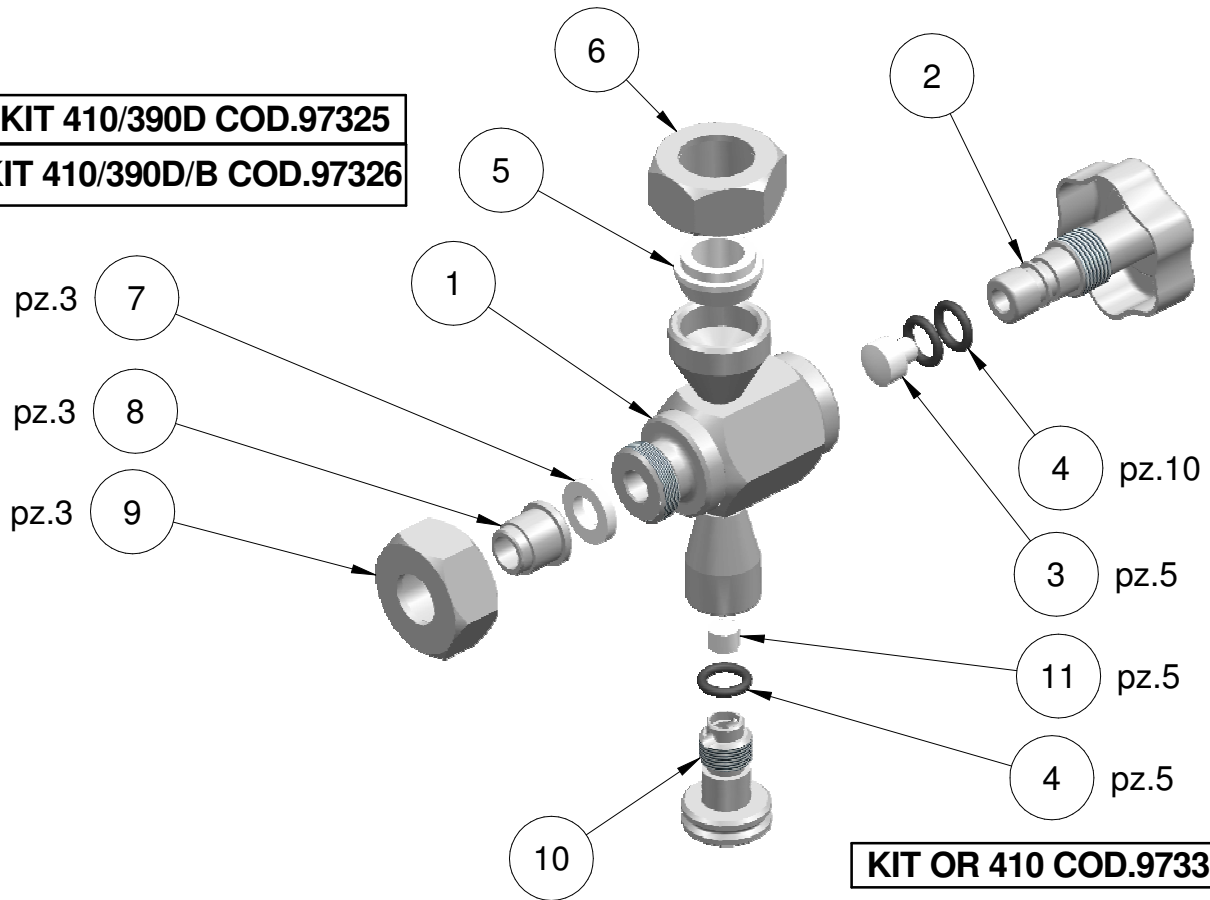




KIT 410/390D COD.97325
KIT 410/390D/B COD.97326



KIT OR 410 COD.97331

COD. F8A210 (304L) - F8B210 (316L)			
Nr.	Article No.	Designation	Qty
1	8A004	BODY HEXAGON	1
2	8A031	SPINDLE WITH HANDLE	1
3	97079	PIN	1
4	97072	GASKET OR	2
5	97089	GASKET Ø16 - Ø20 - Ø24	1
6	8A052	NUT G3/4"	1
7	97066	GASKET §18	1
8	8A041	PIPE §17	1
9	8A051	NUT G 1/2"	1
10	8A029	SPINDLE	1
11	97080	PIN §8,5	1