

Butterfly valves  
Leakage butterfly valves  
Ball valves



Standard



**KIESELMANN**  
FLUID PROCESS GROUP



## Quality down to the smallest detail

Butterfly valves and ball valves are the most used shutoff devices in process engineering. Demand the best from your plant! KIESELMANN stainless steel valves ensure top quality in dimensional stability and surface finish. All the sealing elements used, naturally have the approvals required for the food industry, e.g. FDA and EHEDG Hygiene Certificate. The modular system enables quick and easy changeover from manual to pneumatic or electropneumatic actuator with proximity switch or KI-TOP control head at any time.



Option: Multi-way butterfly valve with adjustable linkage

## Butterfly valves, Leakage butterfly valves and Ball valves – Manual operation

### Butterfly valves

DN 15–200/1"–4"

- ▶ Thermally stable handle in ergonomic design with 360° actuation, 90° locking or optionally switching limitation
- ▶ Standard or short handle design, Material: plastic, optionally in colours of your choice or stainless steel
- ▶ Sealing materials: silicone, EPDM, Viton, HNBR, *k-flex*
- ▶ Suitable for vacuum use

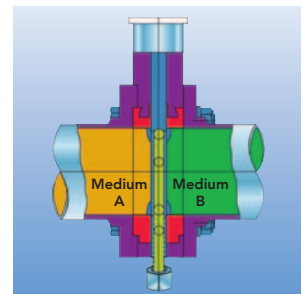


Version with proximity switches

### Leakage butterfly valves

DN 50–150/2"–4"

- ▶ Cost effective leakage protection
- ▶ Sealing materials: EPDM, HNBR
- ▶ Hygienic design with external connections for cleaning of the leakage chamber
- ▶ Simple design benefits from single seal element making servicing easy.



Functional principle of the leakage butterfly valve

### Ball valve / 3-way ball valve

DN 25–100/1"–4" / DN 25–80

- ▶ Robust construction, easy service design, available with multiple connections
- ▶ Spring preloaded shaft seal
- ▶ Crevice free housing seal based on the aseptic union design.
- ▶ Pressure shock resistant
- ▶ Piggable
- ▶ **Optionally:**
- ▶ PTFE cavity fillers
- ▶ External connections for cleaning the cavity.
- ▶ Heatable



Ball valve cutaway showing internals





## Switch to automatic

KIESELMANN supplies its whole range of butterfly and ball valves with pneumatic 90 degree rotation actuators for automatic operation. All valves can also be easily retro-fitted without intervention in the pipe system. What distinguishes KIESELMANN 90 degree rotation actuators is their particularly high torque and the resulting reserve capacities.

The closed design in a stainless steel housing is absolutely maintenance-free. A standard position indicator also enables to recognize clearly the respective valve status. The practical proximity switch holding device ensures lastingly reliable feedback without annoying readjustment of the proximity switch.



### The actuators are available in the following designs:

- ▶ Air open - air close
- ▶ Air open - spring close
- ▶ Spring open - air close

## Butterfly valves, Leakage butterfly valves and Ball valves with pneumatic actuator

- ▶ High torque
- ▶ Maintenance free
- ▶ Three actuator sizes: PDA 75 / 100 / 125 compatible connection
- ▶ Precise placement of the position indicator, no adjustment required
- ▶ Clearly visible optical position indicator
- ▶ Easy assembly and disassembly
- ▶ 5 year operative guarantee



Clearly visible position indicator with holder for two proximity switches



Closed connection between multiturn actuator and ball valve / leakage butterfly valve

### Butterfly valves with pneumatic 90 degree rotation actuators (PDA)

DN 15 – 40	(PDA 75)
DN 15 – 100	(PDA 100)
DN 125 / 150 / 200	(PDA 125)



### Ball valve with pneumatic 90 degree rotation actuators (PDA)

DN 25 – 80	(PDA 100)
DN 100	(PDA 125)



### Leakage butterfly valves with pneumatic 90 degree rotation actuators (PDA)

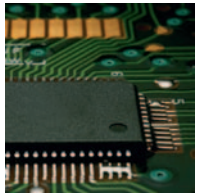
DN 50–80	(PDA 100)
DN 100–150	(PDA 125)



### 3-way ball valve with pneumatic 90 degree rotation actuators (PDA)

DN 25 – 65	(PDA 100)
DN 80 – 100	(PDA 125)





## Clever controls

The high level of automation of modern plants requires intelligent systems. KIESELMANN offers all its butterfly and ball valves with a control head with bus capability. Bus systems enable specific control with feedback and low cabling requirements. The printed circuit board with flange-mounted solenoid valves, placed in a transparent housing, is the same for all KIESELMANN valves. It can be adjusted to the various valve functions by means of a rotary switch. In addition to a mechanical indication, the integrated LEDs enable reliable identification of the valve position on site. With the ASI-BUS-ES control head KI-TOP it is even possible to switch-off individual valves in the plant in case of emergency, whereby the bus remains fully functional and controllable.

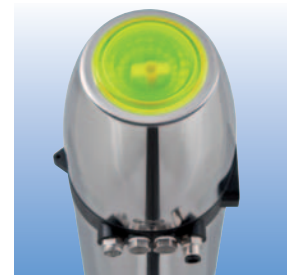


## Shutoff valves with control head

- ▶ Easy, modular retrofitting of the pneumatic valves possible
- ▶ Plug-in circuit board with moulded mounting frame for protection
- ▶ Transparent, splashproof plastic or stainless steel housing
- ▶ Easy maintenance, easy assembly/dismount with 2 screws
- ▶ SPS and ASI bus
- ▶ Control head KI-TOP ASI-BUS-ES with emergency switch-off of the solenoid valves



ASI-BUS-ES control head KI-TOP with selective emergency cut-off and 2 freely assignable control inputs



Perfect visible indication of valve position (green = open, red = closed, flashing = intermediate positions)

Butterfly valve with pneumatic 90 degree rotation actuators and control head KI-TOP



Leakage butterfly valve with pneumatic 90 degree rotation actuators and control head KI-TOP



Ball valve with pneumatic 90 degree rotation actuators and control head KI-TOP



3-way ball valve with pneumatic 90 degree rotation actuators and control head KI-TOP



# For your Advantage – The FLUID PROCESS GROUP

KIESELMANN bundles by participation in companies the authority in different parts of plant engineering and component production within the FLUID PROCESS GROUP. This network of independent companies allows to offer and produce complex projects as a general contractor via partner companies, without the common practicing surcharges.



Paul-Kieselmann-Str. 4–10 · 75438 Knittlingen · Germany  
Phone +49 (0)7043 371-0 · Fax +49 (0)7043 371-125  
[www.kieselmann.com](http://www.kieselmann.com) · [info@kieselmann.de](mailto:info@kieselmann.de)



**KIESELMANN GmbH**  
Innovative, reliable valves  
Process components  
Beverage pipes  
Units



**KIESELMANN Anlagenbau GmbH**  
Planning and construction of plants  
CIP plants  
Flash pasteurisers  
Pigging technology  
Process automation



Ferdinand-von-Steinbeis-Ring 31 · 75447 Sternefels · Germany  
Phone +49 (0)7045 20498-0 · Fax +49 (0)7045 20498-90  
[www.aquaduna.com](http://www.aquaduna.com) · [info@aquaduna.com](mailto:info@aquaduna.com)



**AquaDuna GmbH & Co KG**  
Cleaning technology  
Process automation  
Mechatronics  
Medical technology



Lautlinger Weg 3 · 70567 Stuttgart (Möhringen) · Germany  
Phone +49 (0)711 7 67 26 60 · Fax +49 (0)711 7 67 26 69  
[www.va-group.de](http://www.va-group.de) · [info@va-group.de](mailto:info@va-group.de)



**VA Food Processing GmbH**  
Planning and construction of plants for  
food and dairy technology  
Diaphragm filtration  
Process automation



Rötestraße 19 · 74321 Bietigheim-Bissingen · Germany  
Phone +49 (0)71 425 81-0 · Fax +49(0)71 425 81-99  
[www.rieger-behaelterbau.de](http://www.rieger-behaelterbau.de) · [info@rieger-behaelterbau.de](mailto:info@rieger-behaelterbau.de)



**RIEGER Behälterbau GmbH**  
Stainless steel tanks  
Unit construction  
Agitator tanks  
Total juice extractor



[www.kieselmann.com](http://www.kieselmann.com)