

2

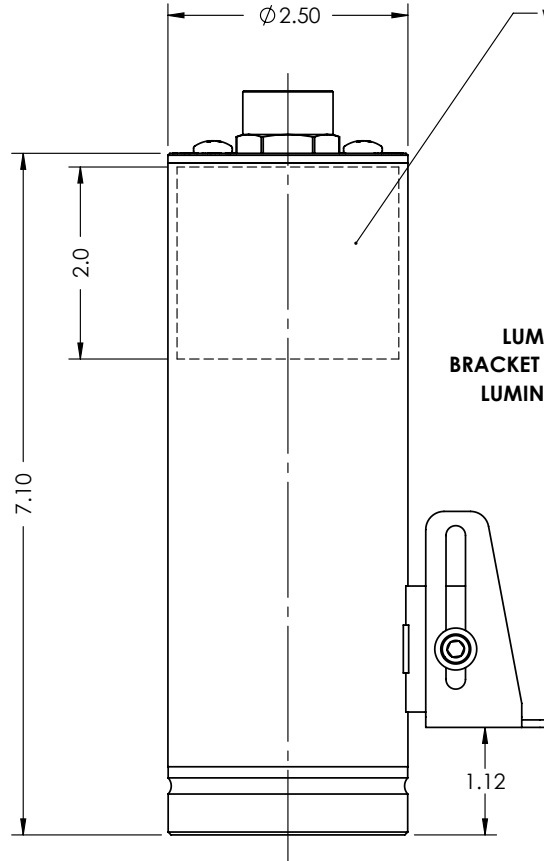
1

NOTES:

1. LUMINAIRE CAN BE SUPPLIED FOR USE WITH AC OR DC POWER
AC VOLTAGE: 120/220/277 VAC; DC VOLTAGE: 8-36 VDC
2. SEE INSTALLATION/OPERATION INSTRUCTIONS FOR WIRING INFORMATION
3. UNIT WILL BE PROVIDED WITHOUT SWITCH FOR 277 VAC OPERATION
4. SEE DWG LUM17-9501 FOR TRI-CLAMP MOUNT INFORMATION

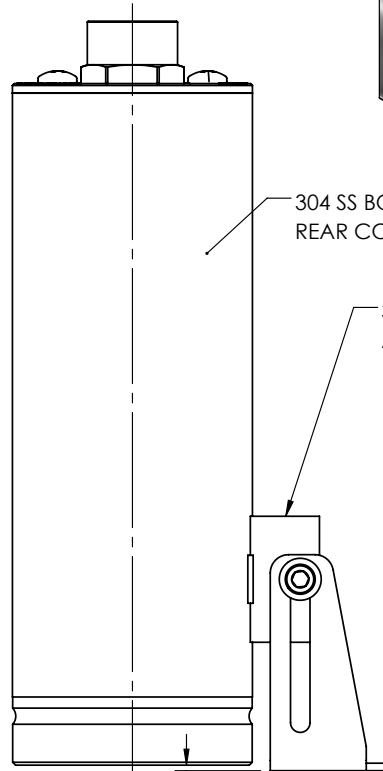
| REVISIONS | | | | |
|-----------|------------------|----------|---------|----------|
| REV | DESCRIPTION | DATE | DRAWN | APPROVED |
| A | ORIGINAL RELEASE | 05/02/18 | J.CUSTY | |

B



**LUM17
BRACKET MOUNT
LUMINAIRE**

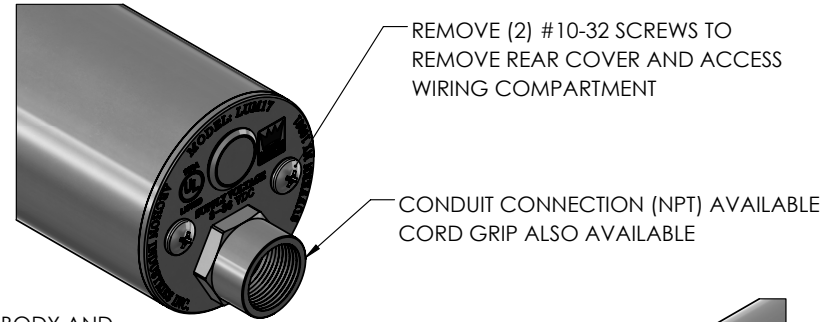
WIRING COMPARTMENT



304 SS BODY AND
REAR COVER

304 SS MTG BLOCK
AND BRACKET

0.06



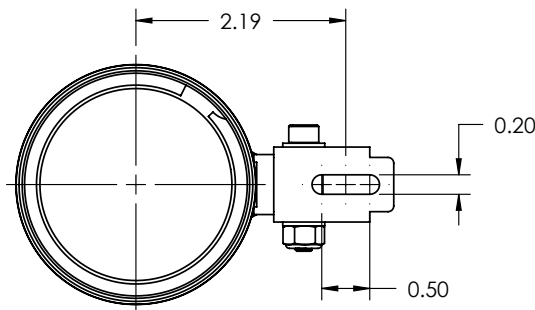
REMOVE (2) #10-32 SCREWS TO
REMOVE REAR COVER AND ACCESS
WIRING COMPARTMENT

CONDUIT CONNECTION (NPT) AVAILABLE
CORD GRIP ALSO AVAILABLE



GLASS LENS AND SEAL GASKET
SUPPLIED AS STANDARD

A



2

| | | | | |
|--|----------------------|-----|-------|----------|
| UNLESS OTHERWISE SPECIFIED | DR | JPC | DATE | 05/02/18 |
| DIMENSIONS IN INCHES | CHKD | | DATE | |
| DECIMALS | APVD | | DATE | |
| X ± .030 | APVD | | DATE | |
| XX ± .015 | | | | |
| XXX ± .010 | | | | |
| REMOVE ALL BURRS AND BREAK SHARP EDGES .02 MAX | MATERIAL: | | NOTED | |
| SURFACE ROUGHNESS ✓ | FINISH: | | NONE | |
| DIMENSIONS AFTER PLATING OR COATING | DO NOT SCALE DRAWING | | | |
| THIRD ANGLE PROJECTION | | | | |



357 SPOOK ROCK ROAD
SUFFERN, NY 10901
(845) 368-3600
FAX (845) 368-3040

| | | |
|---|--------|-----------------|
| TITLE: LUMINAIRE, BRACKET MOUNT, LUM17-1000 | | |
| SIZE A | SCALE: | SHEET 1 OF 1 |
| DWG. NO. LUM17-9502 | | REV A |

B

A

1