



ARCHON model HLM Lighting Units

Section 2003
Bulletin 1001
Issued 01/08
Page 004

ARCHON model HLM Lighting Unit

The ARCHON model HLM is for non-hazardous areas only. These lights offer combined Lighting and Viewing in one sightglass and are used primarily with model SS type sightglasses.

The model SS units are for sanitary applications found in the Food, Dairy and Pharmaceutical industry and utilize a "Collar Nut" design.

Application:

Used on ARCHON model SS type sightglasses. Providing lighting and viewing in one sightglass!

Ideal for Food, Dairy and Pharmaceutical type applications.

Service:

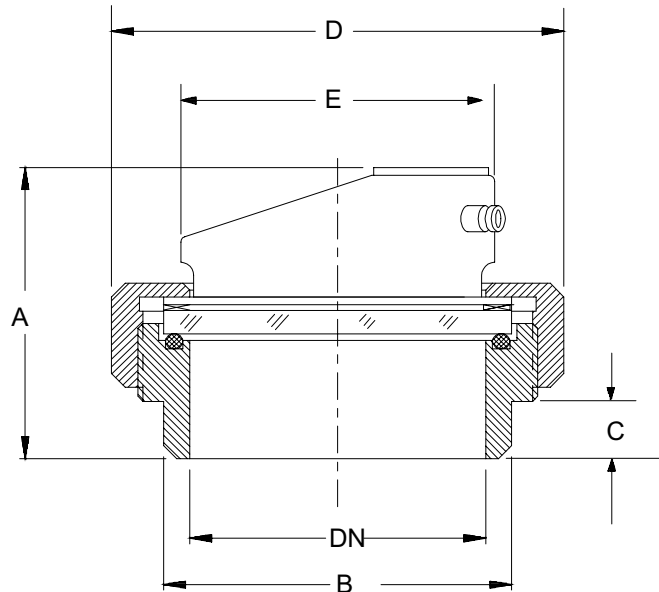
For Non-Hazardous applications only. Units are equipped with a momentary on/off switch. The Lighting units operate independent of operating conditions inside of the vessel.



Electrical:

24V/20, 50 or 100W 120V/ 100W
 Halogen Bulb

The model HLM is also available in Stainless Steel!



Model	A	B	C	D	E	Voltage	Watts
HLM-SS-65	4.2	2.8	1.0	4.4	3.0	24 dc 12 dc	20 20
HLM-SS-80	4.2	3.4	1.0	5.0	3.6	24 dc 12 dc	20 20
HLM-SS-100	4.8	4.2	1.4	5.8	4.4	24 dc 12 dc	20, 50 20, 50
HLM-SS-125	4.8	5.2	0.9	7.0	5.3	24 dc 12 dc	50, 100 50