



ARCHON model SS Dairy Sightglasses

ARCHON model SS Screwed Sightglasses

The ARCHON model SS sight glasses are used for visual control of processes inside vessels, storage tanks, mixers, reactors etc. They are preferably used in the Pharmaceutical, Cosmetics and Food Industries and General Processing.

Construction and Standard Materials:

- Weld Ferrule 304 or 316L
- Grooved Collar Nut 304SS
- Glass Plate Tempered Borosilicate
- Gasket PTFE
- Gasket on Product Side Silicone



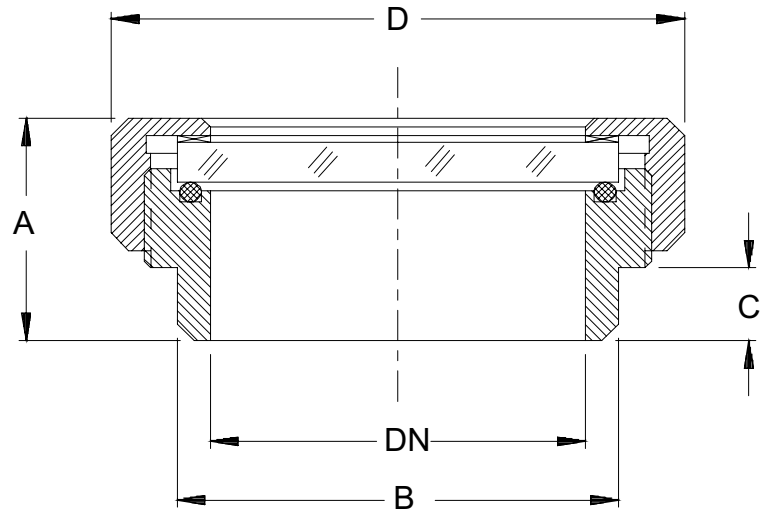
Operating Conditions:

- Pressure 85 psig
- Vacuum Full Vacuum
- Temperature 500 degF

Available Options:

- Non-Hazardous Lighting Units
- Low Pressure Wiper

Special Material and Special Configurations are available.



Combined lighting and viewing is achieved with the model HLM lighting unit.



Model	A	B	C	D
SS-65	4.2	2.8	1.0	4.4
SS-80	4.2	3.4	1.0	5.0
SS-100	4.8	4.2	1.4	5.8
SS-125	4.8	5.2	0.9	7.0