



ARCHON model AKG-FPTFE Sight Flow Indicator

Section
Bulletin
Issued
Page

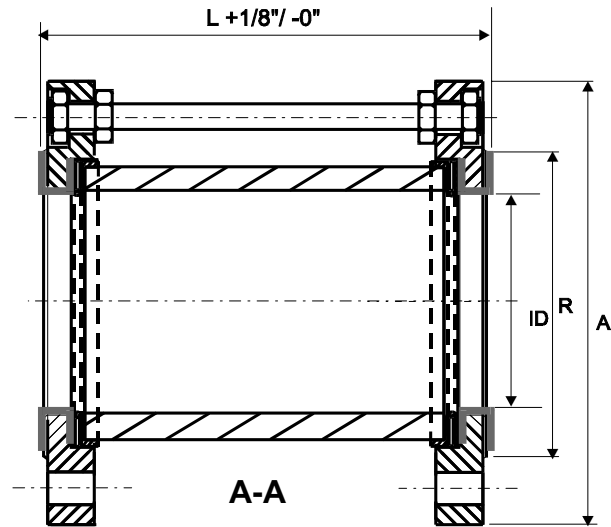
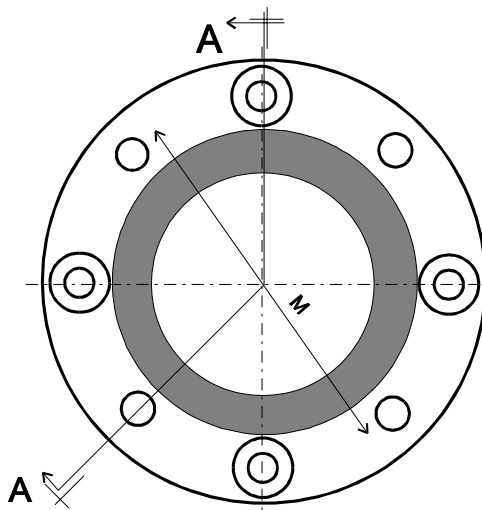
2003
1001
01/08
023

ARCHON model AKG-FPTFE Full View ANSI Flange Sight Flow Indicator

The model AKG-F-PTFE is a Flanged Sight Flow Indicator with PTFE lining. Ideal for corrosive environments. This unit provides full 360 degree viewing of Process Media and is designed to provide maximum visibility of system fluid. End connections are standard 150# ANSI. This unit is best suited for vertical applications but horizontal mounting is allowed when no mechanical force is exerted on the glass cylinder.

Features:

- Standard 150# ANSI Flange
- Stainless Steel and Carbon Steel material is standard
- Standard cylinders are Heavy Wall Borosilicate Glass
- Available in varying lengths to 48".
- Graduated or clear cylinders are available
- Protective shields are available



Model No.		ANSI 150# RF Flange Size	Dimensions (in)			Maxm. Pressure (psig)
			L	A	ID	
AKG-FPTFE-	0.5	1/2"	4.06	3-1/2	0.37	150
AKG-FPTFE-	0.75	3/4"	4.06	3-7/8	.69	150
AKG-FPTFE-	1	1"	4.06	4-1/4	.87	150
AKG-FPTFE-	1.5	1-1/2"	4.06	5	1.25	120
AKG-FPTFE-	2	2"	4.81	6	1.75	100
AKG-FPTFE-	3	3"	5.43	7-1/2	2.78	100
AKG-FPTFE-	4	4"	7.56	9	3.87	70
AKG-FPTFE-	6	6"	10.06	11	6.06	45
AKG-FPTFE-	8	8"	13.43	13-1/2	8.39	25
AKG-FPTFE-	10	10"	14.18	16	9.07	20
AKG-FPTFE-	12	12"	14.31	19	11.62	20

(800) 554-1394

www.ARCHONind.com

ARCHON Industries, Inc.
357 Spook Rock Road, Suffern NY 10901
www.ARCHONind.com

fax: (845) 368-3040

sales@ARCHONind.com