



ARCHON Industries, Inc

Liquid Level Gauges

Model:

CM-LLG



INSTALLATION & MAINTENANCE INSTRUCTION

Instruction No.: **1014.3**
Revision Issued: **09/27/12**
Approved: **Engineering Manager**

357 Spook Rock Road
Bldg # 1 – 505
Suffern, NY 10901



Tel.: (845) 368-3600
Fax: (845) 368-3040
sales@archonind.com

Warning

ONLY QUALIFIED PERSONNEL WHO ARE FAMILIAR WITH GAUGE GLASS VALVES AND THEIR OPERATION SHOULD UNDERTAKE INSTALLATION OF THIS PRODUCT.

Danger

Failure to properly install could result in serious personal injury and property damage. Read all warnings and instructions before performing installation or maintenance. Safety glasses and gloves should be worn at all times when working with or examining water gauge glass and connections.

NOTE: Gauge is not suitable for steam-water applications.

INSTALLATION

The ARCHON Model CM-LLG level gauge comes assembled from the factory.

1. Disassemble the male NPT connectors from the gauge by unscrewing the hex head cap screws. (ITEM 10)
2. Apply thread sealant to the pipe threads of the connectors and install into the vessel mounting connections. **NOTE:** Make sure that the connectors are installed evenly with the same insertion depth to ensure a positive seal between connectors and gauge frame assembly end blocks.
3. Carefully slide o-ring (ITEM 7) over the male connectors as shown on the parts drawing.
4. Slide the gauge frame assembly over the male connectors. The top of the gauge is identified by the hex plug. When the gauge has been positioned against the male connectors, make certain the o-rings are seated in the o-ring counter bore.
5. Reinstall hex head cap screws (ITEM 10) and o-rings (ITEM 9) with gauge positioned on the male connectors.
Caution: On gauges constructed of brass, do not strip threads by over-tightening cap screws.

NOTE: FAILURE TO SLOWLY BRING THE GAUGE INTO SERVICE WILL CAUSE RAPID PRESSURIZATION OF THE SIGHT TUBE WHICH COULD RESULT IN SERIOUS PERSONAL INJURY AND PROPERTY DAMAGE.

MAINTENANCE

NOTE: Do not proceed with any maintenance unless the gauge has been relieved of all pressure or vacuum and has reached ambient temperature. Gauge should be flushed out to remove any hazardous liquids.

1. Cleaning of the sight tube can be accomplished without removal of the sight tube from the assembly. Using a standard tube brush, access the tube via the vent/drain connections.

Warning

Read all warnings and instructions before performing installation or maintenance. Safety glasses and gloves should be worn at all times when working with or examining water gauge glass and connections.

Danger

Improper installation or maintenance of gauge glass and connections can cause immediate or delayed breakage resulting in bodily injury and/or property damage.

Use And Care

DO NOT's

DO NOT use glass if it contains any scratches, chips, or any other visible signs of damage.

DO NOT reuse any tubular glass packing.

DO NOT subject gauge glass to bending or torsional stresses.

DO NOT's

DO NOT over tighten glass packing nuts.

DO NOT allow glass to touch any metal parts.

DO NOT exceed the recommended pressure of the gauge or gauge glass.

DO NOT clean the gauge or gauge glass while pressurized or in operation.

DO's

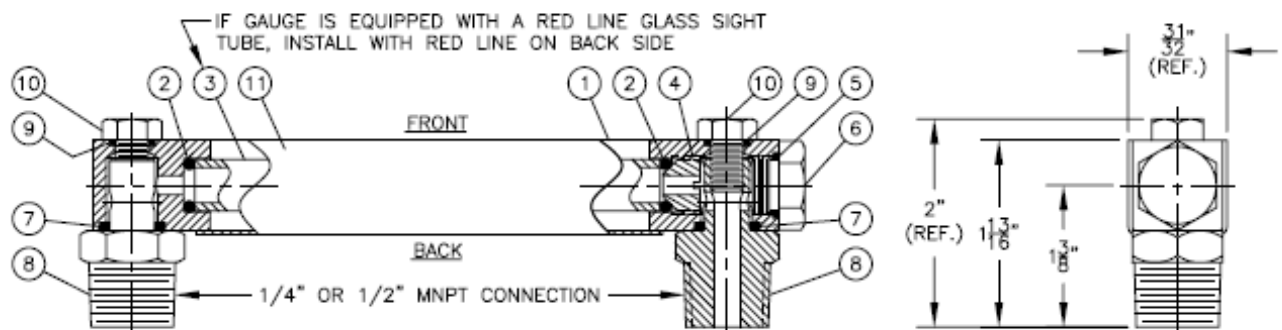
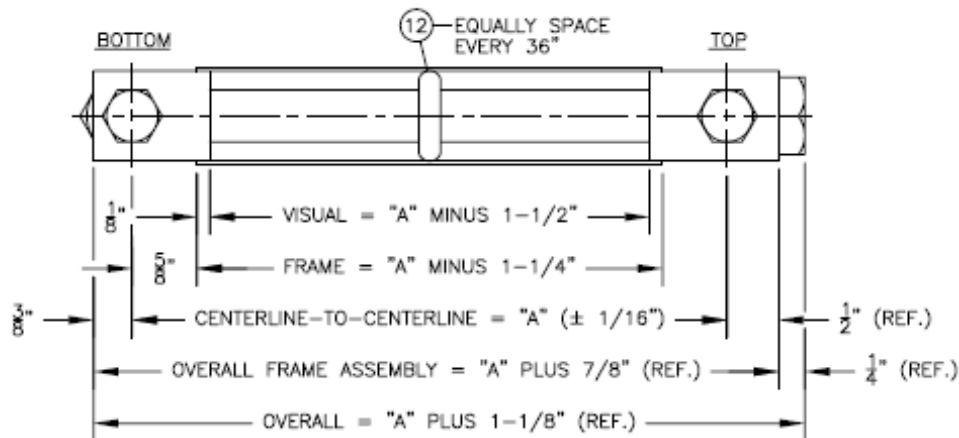
DO verify proper gauge has been supplied.

DO examine gauge glass and packing carefully for damage before installation.

DO install protective guards and utilize automatic ball checks where necessary to help prevent injury in case of glass breakage.

DO inspect the gauge glass daily, keep maintenance records, and conduct routine replacements.

DO protect glass from sudden changes in temperature such as drafts, water spray, etc.



DIMENSIONAL INFORMATION AND SIGHT TUBE LENGTH FORMULA:
 CENTERLINE-TO-CENTERLINE (DIMENSION "A") TO BE SPECIFIED BY CUSTOMER
 SIGHT TUBE LENGTH = "A" MINUS 1-1/4"

IMPORTANT NOTE:
 CUSTOMER MUST SPECIFY MODEL NUMBER LOCATED ON GAUGE
 IDENTIFICATION DECAL WHEN ORDERING REPLACEMENT PARTS.

BILL OF MATERIALS		
ITEM	QTY.	DESCRIPTION
1	1	FRAME, GAUGE (ASSEMBLY)
2	2	SEAL, O-RING FOR SIGHT TUBE
3	1	TUBE, SIGHT (1/2" O.D.)
4	1	SEAT, PACKING FOR SIGHT TUBE O-RING SEAL
5	1	SEAL, O-RING FOR SEAL PLUG
6	1	PLUG, SEAL FOR SIGHT TUBE ACCESS PORT
7	2	SEAL, O-RING FOR PROCESS CONNECTIONS
8	2	CONNECTION, PROCESS
9	2	SEAL, O-RING FOR CAP SCREWS
10	2	SCREW, CAP HEX HEAD 5/16"-18UNC X 1/2" LG.
11	1	DECAL, IDENTIFICATION
12	AS REQ'D.	ISOLATOR, SIGHT TUBE

357 Spook Rock Road
 Bldg # 1 - 505
 Suffern, NY 10901



Tel.: (845) 368-3600
 Fax: (845) 368-3040
 sales@archonind.com